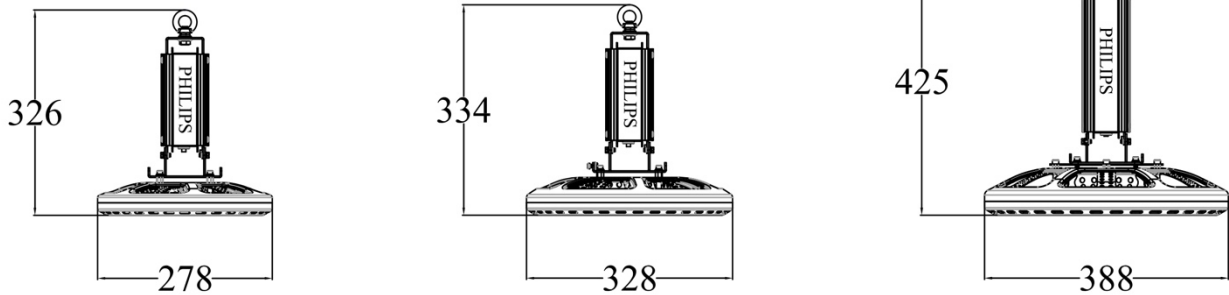


High Bay Pyramid



IMPORTANT INFORMATION:

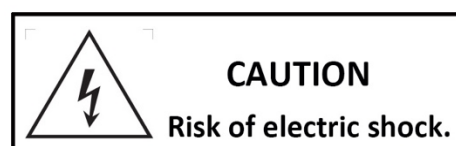
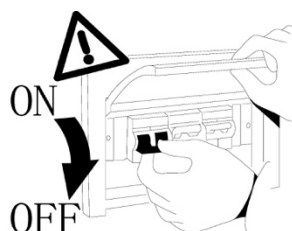
1. Please read this instruction carefully before installation and keep it for future reference.
2. Please conform to the instruction of equipment and installed by professional.
3. Make sure correct voltage applied before use and keep away from heat and vibration source.
4. The light source of this luminaire is not replaceable. When the light source reaches its end of life the whole luminaire shall be replaced.
5. For indoor and outdoor use.

MAIN PARAMETER:

Product:	710019	715019	720019
Rated Voltage	AC 220-240V 50/60Hz	AC 220-240V 50/60Hz	AC 220-240V 50/60Hz
LED Rated Power	98W	148W	198W
System Power	100W	150W	200W
LED	Philips Luxeon 3030 SMD LED		
LED Driver	Constant Current 1050mA	Constant Current 1050mA	Constant Current 1050mA
Color Temperature	4000K	4000K	4000K
Protection	Class I	Class I	Class I
Beam Angle	90°	90°	90°
IP Rated	IP65	IP65	IP65
Operation Temperature	-40°C~65°C	-40°C~65°C	-40°C~65°C
Weight:	2,5 kgs	2,9 kgs	4,7 kgs
Product Size:	Ø278mmxH326mm	Ø328mmxH334mm	Ø388mmxH425mm

INSTALLATION INSTRUCTIONS:

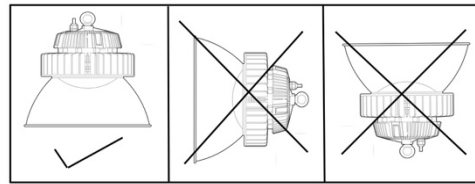
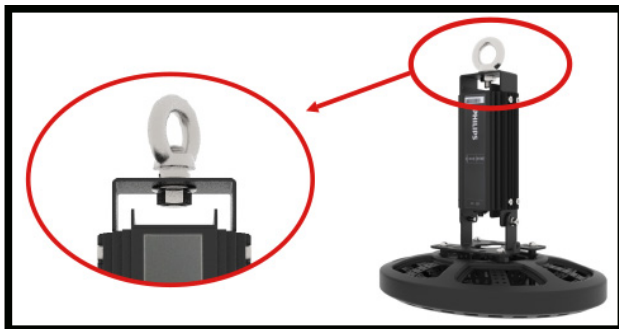
1. Always switch off the power supply before installation.
2. Make sure all parts are ready when open the box and prepare the installation tools the lighting needs.
3. Should be installed by qualified electricians.
4. If there is any damage on the housing or glass cover, should view it as disqualified product that cannot be used.
5. If the external flexible cable or cord of this luminaire is damaged, it shall be exclusively replaced by the manufacturer or his service agent or a similar qualified person in order to avoid a hazard.



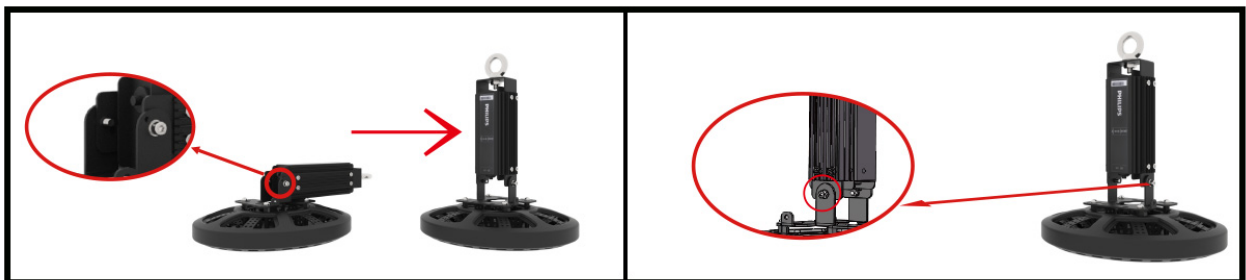
INSTALLATION STEPS:

1. Select the required position for the luminaire. Secure the bolt on luminaire and ensure the fixings are suitable to withstand the weight of this product.

WARNING: a) The luminaire is heavy and must have suitable fixings.
 b) Lighting source downward.



2. Loosen hexagon screws and stand driver in vertical position. Tighten hexagon screws and make sure the driver is secured in upright position.

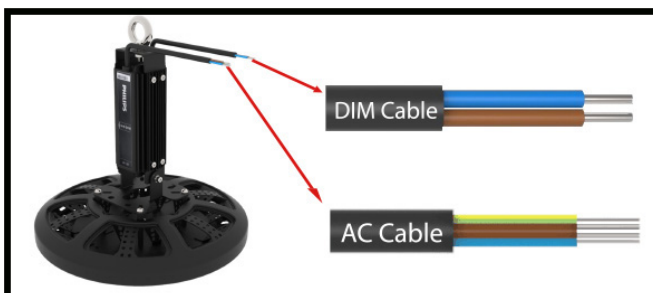


3. Provide a power supply to the luminaire using a suitable cable. Connect the mains supply to the luminaire.

Note: The Luminaire is pre-wired with 1,5m AC cable (3-core) and 1,5m Dim cable (2-core).

IMPORTANT: These luminaires are Class I and must be earthed.

- Mains supply LIVE (Brown) – L
- Mains supply NEUTRAL (Blue) – N
- Mains supply EARTH (Yellow/Green) - E



AC/L (Brown)
 AC/N (Blue)
 FG⊕ (Green/Yellow)

**IP65 Junction box not included.
 Installation may require advice from
 a qualified person.**

4. Switch on the power supply.

